



UTP
GROUP

WWW.UTPGROUP.CO

TUBULAR PRODUCT MANUFACTURERS



A TAURANI HOLDINGS COMPANY



MANUFACTURERS OF ERW STEEL TUBES AND PIPES
30+ YEARS OF INDUSTRY EXPERTISE
RESPONSIBLE AND SUSTAINABLE STEEL MAKING
SERVING INDUSTRIES ACROSS THE GLOBE

INTRODUCING UTP GROUP

The legacy of UTP Group has propelled it to the forefront of the manufacturing of HFIW Steel Pipe and Tube for more than three decades. With careful production planning, the company maintains full control over every aspect of its product quality, from the precise selection of raw materials to the methods employed in shaping and refining its products. This unwavering commitment ensures customer satisfaction and delight at every step of the process.

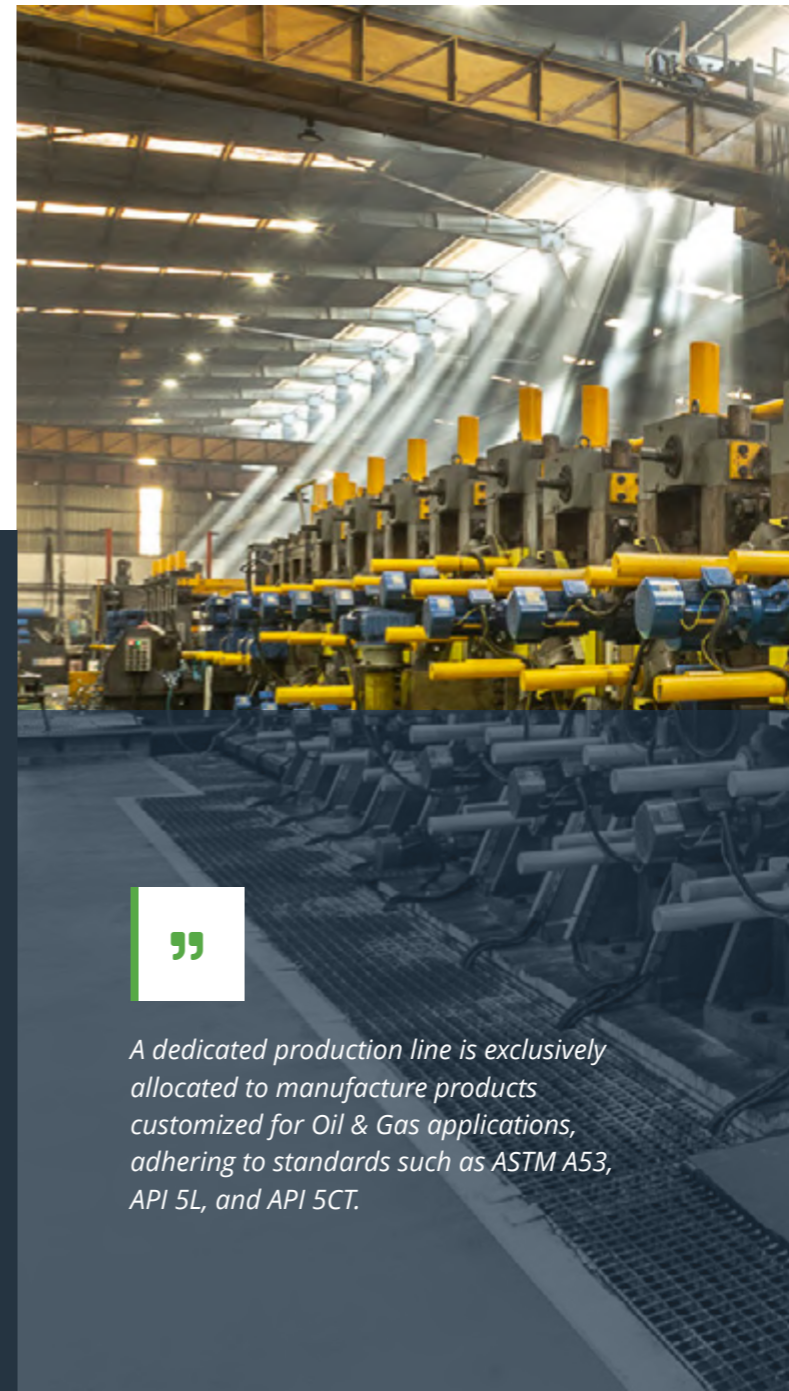
OUR ENTITIES

With production facilities in Dubai Investments Park and JAFZA, as well as a comprehensive sales and stocking/distribution network spanning the GCC, Europe, Australia, and North America, the company is ideally positioned to efficiently service its extensive customer base across five continents.



THL TUBE & PIPE INDUSTRIES LLC

THL Pipe located in Dubai Investments Park-2, Dubai, UAE is equipped to produce a wide range of round pipes, square tubes, and rectangular tubes. Our size range is from 4" to 12" for round pipes, 40 x 40 to 250 x 250 for square tubes, and 60 x 40 to 300 x 200 for rectangular tubes. We excel in fabricating tubes with a wide thickness range, from 1.5 mm to 12.7 mm, utilizing HRC grades such as S235JR, S275J0, S275J2, S355J0, and S355J2, tailored to meet your precise specifications. Additionally, our specialized production lines focus on crafting structural tubes that adhere to stringent standards like ASTM A500, AS/NZS 1163, and EN10219, ensuring top-notch quality and compliance.



28 Countries



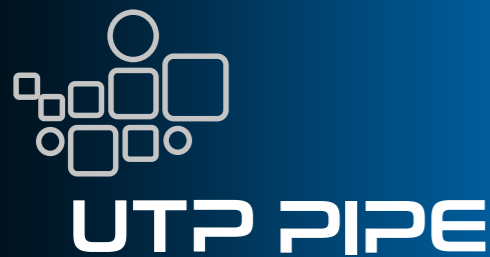
7 Mills



300,000 MT/Annum



450+ Workforce



UNIVERSAL TUBE AND PIPE INDUSTRIES FZE

Committed to providing you with quality products that meet your needs, UTP Pipes in Jebel Ali Free Zone (JAFZA), manufactures Round pipes from sizes 1/2" to 6", Square tubes from size 19 x 19 to 80 x 80 and Rectangular tubes from size 40 x 20 to 100 x 50 in thickness.



A dedicated production line is exclusively allocated to manufacture products customized for Oil & Gas applications, adhering to standards such as ASTM A53, API 5L, and API 5CT.



Pipes and Tubes of various standards and grades ranging from: CHS - 1/2" to 12", SHS - 3/4" X 3/4" to 10" X 10" and RHS - 1 1/2" x 3/4" to 12" X 8"

VISION, MISSION, AND VALUES

VISION

To be the Global Pioneers of Steel Tube and Pipe Industry in terms of Quality, Sustainability and Customer Centricity

MISSION

Becoming Global Industry leaders through Sustainable Partnerships and Quality products. We strive for Continual Innovation and eco-friendly practices.

Supply to every possible corner of the globe, offering the quickest turnaround times and the best customer service by creating the best supply chain.

VALUES

Customer Centricity: Exceed customer expectations through our product and service offerings.

Integrity: We believe in honest, transparent and long-term association with our stakeholders. Reliability, Ethics and Fairness are the foundations of our business conduct.

Excellence: We always strive to be the epitome of Quality.

Pioneering: Through our Symbiotic Network we deliver the most Innovative solutions.

Employee Brand Equity: We build Synergistic Relationships with our People and Customers by providing an environment of Continuous Learning and Partnership.

We are proud of our goods and services, our heritage, and the entrepreneurial spirit that has propelled the UTP Group forward since 1990. We regard ourselves as one large family with shared values and goals. Respect is one of our organisation's pillars. We accept that we are all unique, but we all belong together. Our interaction is distinguished by courtesy, openness, and honesty. Sustainability is a primary focus in everything we do. Our values shape who we are, what we believe in, and how we act.

”

Reliability, Ethics and Fairness are the foundations of our business conduct

MEET THE LEADERSHIP TEAM

UTP Group's leadership team comprises three industry professionals with a wealth of knowledge, helping the company to become a global success story.

”

We are proud of our goods and services, our heritage, and the entrepreneurial spirit that has propelled the UTP Group forward since 1990.



ANIL TAURANI
Group Managing Director

Anil Taurani is a vital member of the team and has been with UTP Group since its inception. As Group Managing Director, he is responsible for ensuring that clients receive exactly what they require and are completely satisfied at all times.



LALIT TAURANI
Group Managing Director

Lalit Taurani has been instrumental in the company's sustained growth. His outstanding skill set and genuine desire have fostered tremendous progress.



SUMIT GHOSHAL
CEO

Sumit Ghoshal joined UTP Group following a thriving career at several leading companies and, as a driven, results-oriented colleague and collaborator, he has contributed enormously to the Group's success.

”

We have an immense amount of knowledge from years of experience as a Manufacturing Company, and continue to expand our practices each and every day.

KEY MILESTONES



> Incorporation of UTP

1990

> Set up of fully automated Japanese technology GI Plant

2000

> Installation of DFT machine in THL

2019



> Launched Nexum™ EN 10217-2 P235GH/S195T for Pressure Equipment (Water, Gas, Fuel & Air)

2021



> Launched Qua®, exclusive brand for structural steel tubes and pipes in KSA and other GCC countries

> Installation of DFT machine at UTP

> Registered Magnus®, the brand for Fire Sprinkler Piping Systems is set for launch in 2024.



2023

1992

> Commercial Production Begins

2007

> Establishment of THL in DIP



2020

> New GI plant with 3-Track pipes in UTP

2022

> UTP & THL install Solar Panels

”

At UTP Group, corporate care and responsibility go beyond the buzzwords and drive change.



i

SOLAR CAPACITIES
 THL - 1,755 KW Solar Project
 UTP - 1,700 KW Solar Project

INVESTING IN THE FUTURE

At UTP Group, a visualisation of future issues assisted the company in understanding the significance of having a resilient infrastructure. With remarkable progress in infrastructure advancement in terms of both technology and industry innovation, this forward-looking philosophy continues to shape the evolution of the company.

We are proud to have introduced new products for the booming gas and water industries as part of our mission to remain at the forefront of progress in these sectors. We are excited to see what the future holds for us and our customers as we continue to innovate and strive to create the best products and services possible!

We are fully aware of our corporate responsibilities and have a number of initiatives in place in order to lessen the impact of the company's activities on the planet.

UTP Group started working on all the parameters in line with global visions very early on, and sustainability was one of those early considerations. This was accomplished in a variety of ways, not the least of which is the company's 3,455 KW photovoltaic solar plant, which saves an average of 3,905 tonnes of CO₂ each year. This is equivalent to the annual energy consumption of 5,500 households.

UTP Group also operates a long-term and sustainable wellness strategy, resulting in a workplace culture that prioritises the health and happiness of employees.

WHAT WE BELIEVE IN

Sustainability is concerned not just with what is done, but also with how it is done. It is a mindset that necessitates leadership; refusing to accept second best in any part of operations, and creating and attaining goals that go beyond regulatory compliance.

As a result, UTP Group aims at reducing any negative impacts on the environment while ensuring an improved quality of life for employees and the community.

We believe that there is no singular answer - every little bit helps when it comes to making an impact.



UTP Group is registered and verified with the Environmental Product Declaration (EPD).



EPD REGISTERED

UTP Group is registered and verified with the Environmental Product Declaration (EPD), which is in compliance with environmental principles under UN Norms - developed using Life Cycle Assessment (LCA) methodology - of high frequency welded steel pipes and tubes, in accordance with ISO 14025 and EN 15804.



TECHNOLOGY TO THRIVE

An understanding of future challenges has allowed UTP Group to strengthen its infrastructure, with comprehensive improvement and evolution in terms of both technology and industry innovation.

At UTP Group, technology is utilised to lower total costs, resolve any technical issues from design to completion, and implement a sustainable strategy in design and manufacture.



ESG PROGRAM FOR EFFECTIVE ESG REPORTING:

- › Thorough Assessment of Carbon Footprint
- › Gap Analysis and Benchmarking
- › Ongoing Strategy and Policy Development
- › Formulation of Sustainable Targets and KPIs



PEOPLE AND WELL-BEING

We are committed to providing professional occupational health services in the workplace, including counselling, health screening, and mental health first aiders.

Our well-being and resilience strategy improves employee focus and performance, boosts productivity, decreases stress and absenteeism, enhances job satisfaction, promotes physical health and general well-being, fosters better relationships with colleagues and managers, and attracts and retains top talent.



SUSTAINABLE OPERATIONS

The environmental/social challenge is massive in scope. UTP Group understands the growing need for raising public awareness about climate change and decreasing its carbon footprint.

We, therefore, aim to improve energy efficiency while adhering to the principle of sustainable development.



We select our suppliers based on their sustainability aims, ensuring that they are in concert with our own sustainability targets.



ECO-CONSCIOUS SUPPLIERS

We select our suppliers based on their sustainability aims, ensuring that they are in concert with our own sustainability targets. Evidence is gathered in terms of the certifications and global standards that these suppliers adhere to.

Everything is 100% recyclable. Our journey does not end with sales; we ensure that our customers receive the very best recyclable materials possible.

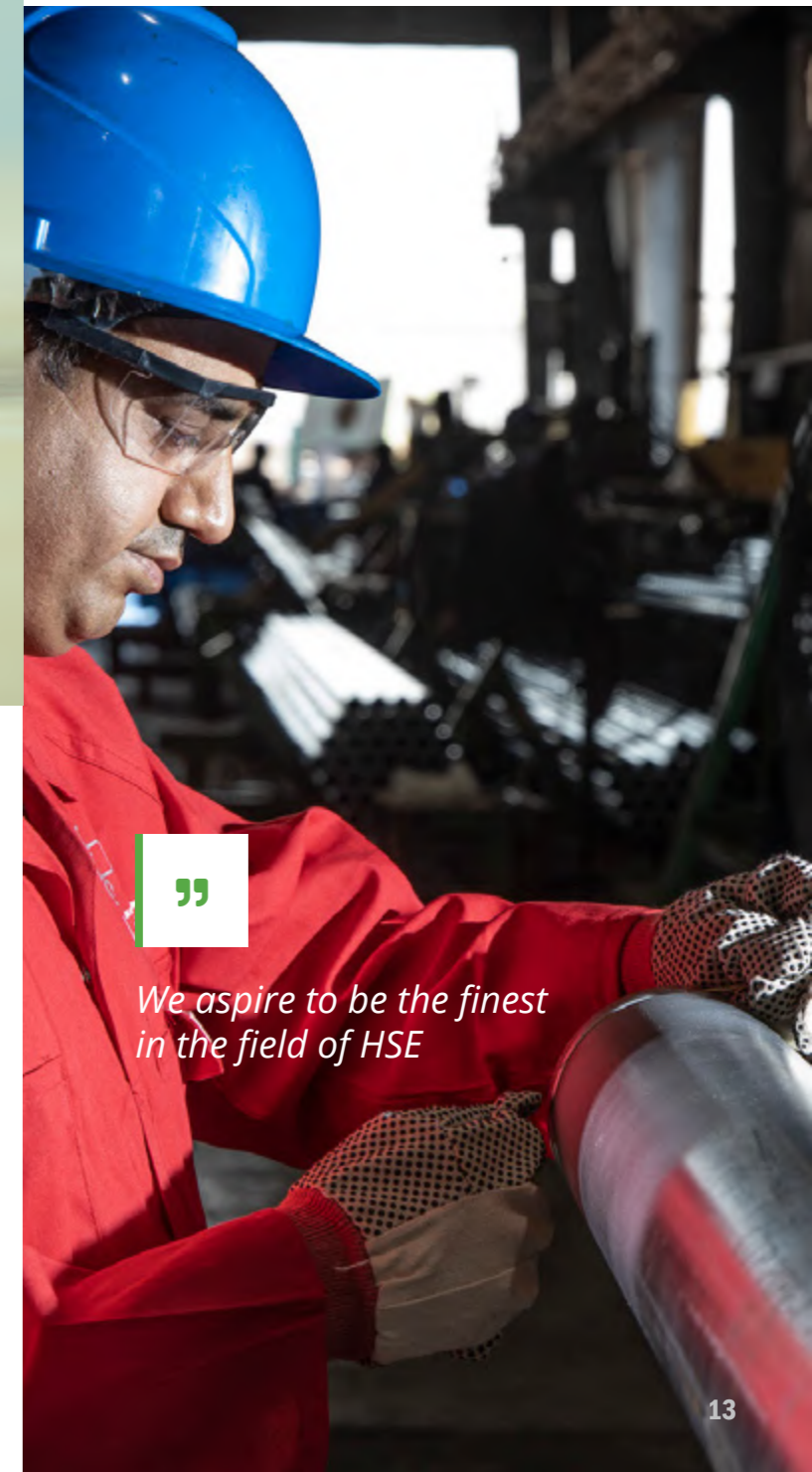
HEALTH AND SAFETY

Our social responsibility is extensive and far-reaching, and the hard work of our skilled personnel and suppliers are essential to our ongoing success. However, we will never, ever compromise on personal health and safety, no matter how big or inspiring our goals are.



”

We will never, ever compromise on personal health and safety



”

We aspire to be the finest in the field of HSE



UTP Group's entire operation is based on the premise of zero injuries or harm to people, the environment, or society. Above all, we prioritise safety, so we have implemented a number of steps to prevent serious HSE events.



HSE has been at the top of UTP Group's agenda for several years, and we have seen beneficial results. Nonetheless, we are continually looking for ways to improve. We strive to do better. We aspire to be among the finest in the field of HSE. And the ultimate result of this aspiration is: We want everyone to make it home from work fit and well.



The HSE action plan is one of the initiatives. A variety of work processes and routines have been introduced or improved, resulting in long-term changes that are critical to safety.

MILLS, PRODUCTS & SIZE RANGES

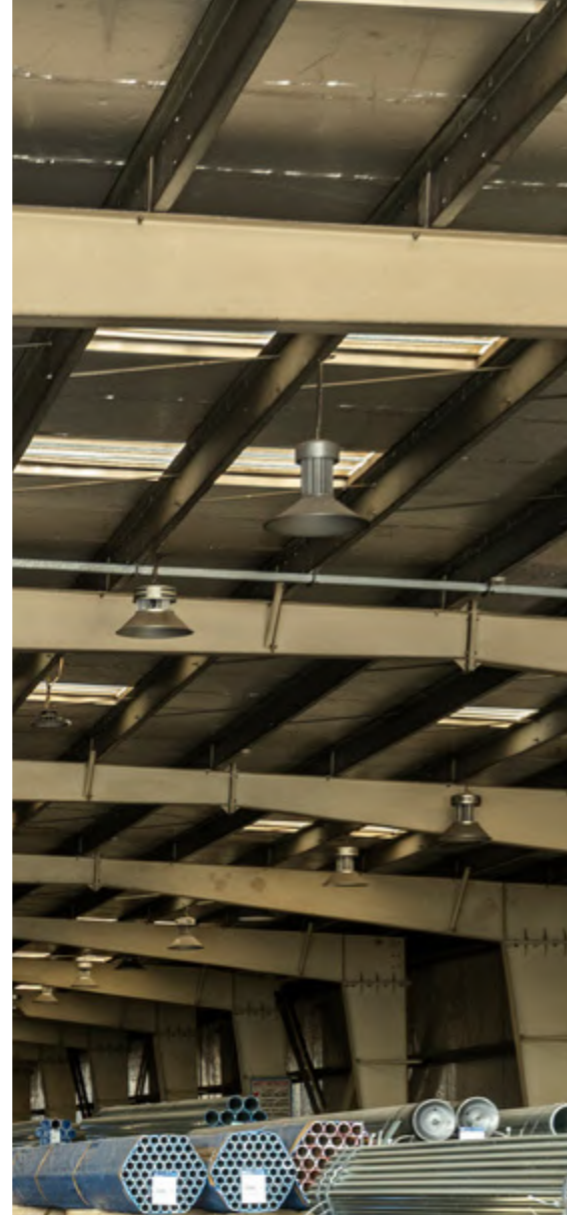
PRODUCTS

Our promise to manufacture only premium products takes on many forms, but nowhere more so than in our product portfolio. We have the machinery, equipment, and skilled personnel to provide a wide array of solutions, including 'End Finished' (square cut, bevelled ends, swaged, threaded and coupled, threaded but not coupled, grooved) and 'Surface Finished' (mill finished, light oil, painted, (Enamel & Water based), galvanized) products.

These products, which can all be manufactured in different grades for a variety of applications, include:

- Round Tubes and Pipes in a size range of ½" to 12"
- Square Hollow Sections in a size range of ¾" x ¾" to 10" x 10"
- Rectangular Hollow Sections in a size range of 1½" x ¾" to 12" x 8"

Simply selling things has never sufficed for UTP Group. That is why we have taken the time and made the effort to ensure that our manufacturing process is of the greatest quality imaginable. With our considerable knowledge and your satisfaction as our top priority, you can be confident that your demands will always be addressed.



APPLICATIONS

In over three decades we have developed and provided a wide repertoire of solutions, with our products used in various applications.

Construction

Our pipes are widely used for bridge foundations, building foundations, and other support, as well as for fencing, lighting poles, posts, space frames, steel towers and scaffolding.

Industrial and Mechanical

We supply hot-rolled tubes for industrial applications such as boiler water tubes, heating and cooling systems, heat exchangers, and mechanical applications.

Irrigation

Our pipes are extensively used in agriculture for conveying water over long distances.

Sprinkler Systems

We provide high-quality hot-dip galvanized or painted solutions for use in water-based fire protection systems.

Chilled Water Systems

Our pipes are ideal for District Cooling Applications, and we offer a wide variety of chilled water and galvanized pipes for structural projects.

OCTG

We have a fully equipped Tubing and Casing Mill, to support the Oil & Gas industry in Oil extraction, for transportation of both Crude Oil and Natural Gas.

QUALITY COMMITMENT

We've earned a reputation for having the best products in the industry by utilising cutting-edge technology and tight quality control procedures. Quality is 'job one' and is incorporated into everything that UTP Group does. Planning meticulously, monitoring our work, and frequent re-evaluation and adjustment are all critical. We uphold quality by proactively identifying and addressing faults before they reach the client.

UTP Group prides itself on superior materials, exceptional care, and advanced technology. As a result, our production teams never cut corners and invest the time, effort, and resources required to ensure that all products meet or exceed the required standards.

SETTING NEW STANDARDS

- UTP Group is committed to manufacturing tubular products that fulfil diverse standards while maintaining high quality, cost-effective pricing, and quick delivery.
- UTP Group is committed to compliance and is always seeking to improve its quality management systems through technological advancement and dedicated collaboration.
- UTP Group guarantees that its Quality Policy is communicated, understood, implemented, and maintained at all levels of the organisation.

MACHINERY AND TESTING

Linsinger Inline Edgemilling Machine

For simultaneous milling of both left and right edges of HR coil (slits) or N type strip edge profile of the material (slits) by aligning and feeding the material.

Technofor In-line Eddy Current Testing

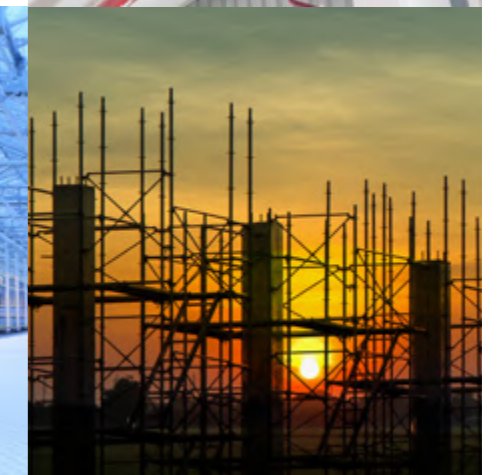
Inline automated eddy current testing of welded pipes for the detection of imperfections (surface and subsurface defect) by segment test head at THL and encircling coil at UTP.

Olympus / Bluestar Inline HR Coil & for Casing/Line Pipe Ultrasonic Testing

Automatic Ultrasonic testing of strip / plate used in the manufacturing of welded pipes for the detection of laminar imperfections.

Olympus / Bluestar Inline Phased Array Ultrasonic Testing For Weld Proofing and Tracking

Inline ERW High Temperature Inspection System integrates into the production line between the weld cooling and annealing, where the pipe temperature is 100 C or lower. A cylindrical phased array probe located on the weld fires at zero degrees.



Olympus / Bluestar Offline Ultrasonic Testing For Weld & Body

For the detection of crack, incomplete penetration, incomplete fusion, porosity, lamination, inclusions and any other imperfections. Weld inspection is usually carried by angle probes in different angles depending on the thickness to detect longitudinal and transverse cracks as well as the volumetric defects.

Drift Testing

Each pipe is drift tested throughout its entire length.

The drift mandrel is inserted to a depth in the tube equal to the length of the drift into the I.D. for end drifting or equal to the entire length of the tube for full length drift. If any tube in which the mandrel does not pass freely through the required drift length or stops due to an obstruction, is rejected.

OCTG FACILITIES AT UTP

UTP has one Mill dedicated for Tubing and one dedicated for Casing.

Tubing Mill

is fully equipped with Online Ultrasonic testing Machine, IBIS system (for monitoring ID scarfing), Weld Seam Normalizer and Hydro tester.

Tubing:

- > Sizes 2-3/8 inch to 4 inch, Wall thickness-0.190 inch to 0.265 inch
- > (60.3 mm OD to 101.60 mm OD, Wall thickness 4.83 mm to 6.65mm)
- > Length-R2 (31 ft to 33 ft)

Casing Mill

is fully equipped with coil ultrasonic testing, online thickness monitor device, weld seam normalizing, hydro testing and offline ultrasonic testing Machine

We also have a well equipped Mechanical Laboratory, like Universal Testing Machine for Tensile Strength, Yield Strength, Elongation, Flattening test, Vickers Hardness Testing for weld and base metal hardness, Impact testing for absorbed energy and Inverted Microscope for Metallographic (Micro/Macro analysis) examinations.

Casing:

Sizes 4-1/2 Inch to 10-3/4 Inch, Wall Thickness-0.205 Inch to 0.450 Inch (114.3 mm OD to 273.05 mm OD, Wall Thickness 5.21 mm to 11.43 mm)
Length-R3 (39 to 42 ft)

INSPECTION AND TESTING

State-of-the-art machinery and equipment are not only used for the manufacture of products but also, in tandem with our highly skilled and professional team, for inspection and testing.

- > Visual and dimension inspection for HR coil (raw material)
- > Visual and dimensional inspection for Slitting
- > Random visual inspection of edge milling
- > Inline ultrasonic testing for HR coil (API PIPE)
- > Inspection of HFIW (High-Frequency Induction Welding)
- > Inline phased array ultrasonic testing for weld profile and tracking
- > Inline normalizing of weld seam (heat treatment)
- > Inline eddy current (NDT) testing of the weld seam
- > Random inspection of pipe dimension
- > Hydro testing of pipes
- > Inline drift testing for casing pipe
- > Offline ultrasonic testing of weld and body pipe for API 5L & 5CT pipes
- > Manual ultrasonic testing of pipe ends
- > Visual and dimensional inspection of pipe

LAB TESTING

- > Mechanical Testing (Tensile strength, Yield strength & Elongation)
- > Flattening Test
- > Drift expansion Test
- > Metallography Test (Microstructure of Weld, HAZ & Base)
- > Vickers Hardness Test
- > Charpy Impact Testing

OUR BRANDS : PIPING & TUBING SOLUTIONS ACROSS DIVERSE SECTORS



NEXUM™ EN 10217-2 P235GH/ S195T PIPES

Manufactured using advanced technology for the ultimate solution in pressure equipment. (Water, Gas, Fuel & Air). Nexum™ is a highly engineered welded pipe built on reliability, consistency, and performance. The ability to bend and connect one length of tube to the next with accuracy and without loss of integrity is what sets it apart from the rest.

The most sophisticated industrial tubing UTP Group has ever engineered, the Nexum™ Hot Finished Pipes range encapsulates the company's philosophy of supplying professional-grade tubes with the highest levels of consistency and quality.

Nexum™ is painted in Red Water Based Paint/Red Oxide for extra protection of pipe surface from corrosion/rust.

Nexum™

These dual-certified tubes are currently available in sizes ranging from 15NB to 150NB in Medium and Heavy. They also offer:



Hyper-Fit Pro: Faster, more accurate for quicker installation

HYPER-FIT PRO

totalwall: Precision wall thickness for consistent end matching, with a size range from 1/2 inch to 6 inch (15mm - 150mm NB)

Loop360: Ultimate roundness for accurate alignment and durability when bending, with an outside diameter tolerance of ±1%.



Thermal X: Elevated temperature properties with improved or added corrosion resistance, toughness, and endurance, suitable for temperature ranges -20°C to +300°C



Qqa® comes as an exclusive brand for structural steel tubes, ERW (electric resistance welding) square tubes, rectangular tubes of any size and shape.

Qqa® has established itself as a leading brand in structural applications. Through high-frequency induction welding at rapid production speeds, we ensure seamless production with zero roll changes.

DIRECT FORMING TECHNOLOGY (DFT)

DFT, which stands for Direct Forming Technology, is a cutting-edge method used to create tubes.

By incorporating it into the mill range without altering the roll, this technology opens up the possibility of producing customized hollow sections.

A fully automatic and computerized process, speeds up setup time and allows easy operation with an intuitive user interface.

Square Hollow Sections (SHS)
 Product Range: 20mm x 20mm to 200mm x 200mm
 Thickness: 1.5mm to 12.5mm
Rectangular Hollow Sections (RHS)
 Product Range: 40mm x 20mm to 250mm to 150mm
 Thickness: 1.5mm to 12.5mm

Accuracy

Proven design, automatic and computerized process enabling technical perfection.

Uniformity

Attaining technical precision and ensuring corner radius control are facilitated through autonomous process control and computerization.

With precise engineering and advanced manufacturing processes, we ensure the pipes meet the necessary industry specifications, ensuring optimal performance and durability.

REASONS TO CHOOSE

Time Saver

Enables quick delivery by welding at high production speed.

Tailor-made Solutions

Manufacturing hollow sections in custom sizes and delivering goods of excellent quality.



Magnus® brand is synonymous with quality, reliability, and adherence to strict safety regulations.

Magnus® is committed to being a trusted partner for construction companies, contractors, and engineers who prioritize the safety and protection of their projects.

By choosing Magnus® ERW pipes for fire sprinkler piping systems, professionals can have peace of mind, knowing they are investing in robust, reliable, and compliant solutions that will enhance the fire safety measures of their buildings. In fire sprinkler systems, steel pipes are commonly connected using various methods such as **threaded**,

grooved, swaged, or plain-end fittings.

Among these options, grooved fittings are often preferred as they offer the advantage of faster installation, making them the primary choice.

i Typically, steel pipes with a diameter of 2.0 inches and smaller are joined using threaded or plain-end fittings.

i Steel pipes measuring 2.50 inches and larger are typically connected using threaded, swaged, or grooved fittings.

BENEFITS

➤ Exceptional durability, strength, and the ability to withstand high pressures of heat and velocity, making them highly suitable for fire-resistant applications.

➤ Being corrosion resistant, it can withstand prolonged exposure to water and gas without compromising its structural integrity.

➤ Resilient to heavy shock and vibrations, making them the preferred choice for construction and maintenance projects that experience significant traffic or footfall.

➤ Steel's malleability allows for easy bending, forming, and fabrication, enabling it to be manufactured into various shapes, sizes, and configurations to suit specific requirements.

ASTM A795 Standard Specification for Black and Hot-Dipped Zinc-Coated (Galvanized) Welded and Seamless Steel Pipe for Fire Protection Use

ASTM A53, Standard Specification for Pipe, Steel, Black and Hot-Dipped, Zinc-Coated, Welded and Seamless

ASTM A135, Standard Specification for Electric-Resistance-Welded Steel Pipe

Our sprinkler pipes of grades ASTM A53 / ASTM A135 / ASTM A795 Grade A & B pipes are approved by UL & FM for the sprinkler system.

OUR PRODUCTS: GLOBALLY EMBRACED EXCELLENCE

Manufacturing Standards

ASTM A53 Gr. A & B, ASME S A53 Gr. A & B, ASTM A135 Gr. A & B, ASTM A795 Gr. A, AS 1074, AS/NZS 1163, API 5L A25 up to X70 PSL 1, API 5L Gr. B up to X80 PSL 2, API 5CT Gr. H40 & J55, EN 10255, EN 10217-1, EN 10217-2, ASTM F1083

Applications

- > Agriculture
- > Cattle Pen Tubes
- > Chilled Water Systems
- > Structural Tubes
- > Scaffolding
- > Fencing
- > Fire Fighting Applications
- > Gas & Water Tubes
- > Green House Tubes
- > Handrails
- > Lighting Poles
- > Parking Posts
- > Space frames
- > Sprinkler Systems & Submersible/Deep Well
- > Telecommunication Poles
- > Tubular Poles
- > Oil and Gas
- > Casing & Tubing and more.

Manufacturing Standards

EN39

Applications

- > Scaffolding & Construction

Manufacturing Standards

AS/NZS 1163, ASTM A 500, EN 10219, ASTM F0183

Applications

- > Mechanical and General Engineering

Our Specialized Products

Black and Galvanized Structural Tubes

Manufactured according to ASTM A500, AS/NZS 1163, EN10219 from 15mm to 150mm, the tubes are suitable for Construction and Structural Use

Conveyor Roller Tubes

Conveyor Roller Tubes are manufactured in size 101mm, 127mm, 152mm & 165mm as per SANS 657-3

Black & Galvanized Rolled Grooved Tubes

Roll Grooved in Victaulic Grooving Machines in Sizes 1" to 12" in pipe thicknesses as per SCH.10 & SCH.40 M&H.

Black and Galvanized Swaged Posts

Swaged pipes are manufactured in sizes 20mm, 25mm, 32mm and 40mm in thickness from 2.0mm to 2.6mm with swaged neck-length between 90mm to 100mm on both ends and can be used for fencing and as hand-rails.

Pre-galvanized Hollow Sections

Hollow Sections are manufactured from the pre-galvanized coils and strips in different sizes with thicknesses from 1.5mm to 4.0mm.

They are suitable for Fencing with Top Coats and Structural Usage:

- > Rounds - 15mm upto 100mm
- > Squares (mm) - 19x19, 20x20, 25x25, 30x30, 35x35, 38x38, 40x40, 50x50, 60x60, 75x75, 80x80
- > Rectangles (mm) - 40x20, 50x25, 50x30, 60x30, 60x40, 75x50, 80x40, 100x50

Water based Red Painted Pipes

Round pipes from size ½" to 6" manufactured as per EN 10255 & EN 10217-1 in Medium & Heavy series painted with water based Red color paint for applications in Fire protection industries, HVAC and Mechanical Engineering applications.

Water Based Blue Painted SHS & RHS

SHS & RHS manufactured as per AS/NZS1163 in Grades C250 / C250 L0, C350 / C350 L0, C450 / C450 L0 are painted with water based blue color paint from sizes 20x20 to 150x150 & 50x25 to 150x100 for Structural applications.

Enamel Based Black Painted CHS

Manufactured as per ASTM A53, ASME A53, ASTM A135, ASTM A795 from ½" to 6" for Sch 10, Sch 40 & Sch 80

Painted & Galvanized Threaded & Socketed Pipes

Manufactured in sizes ½" to 6" for Sch 10, Sch 40 & Sch 80 M&H

Casing & Tubing (OCTG)

Licensed by the API to produce API monogrammed 5CT products in H40 and J55 with both casing and tubing suitable for upgradation to Grade L-80 and N-80



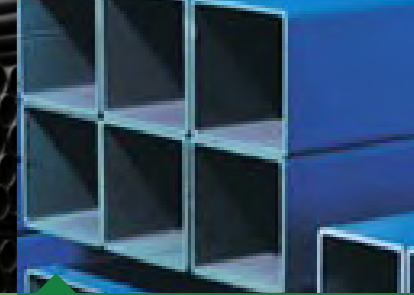
Black Painted Grooved Pipes



Black Painted Pipes



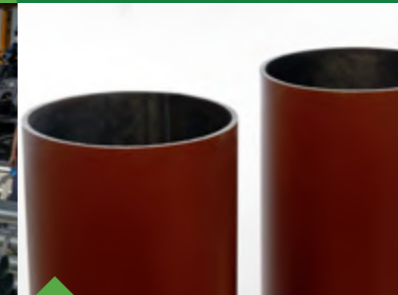
Black Painted Round Pipes



Blue Painted SHS and RHS



Galvanized Round Pipes



Red Painted Pipes



Steel Casing and Tubing Pipes



Threaded with Socket



Rectangular Tubes



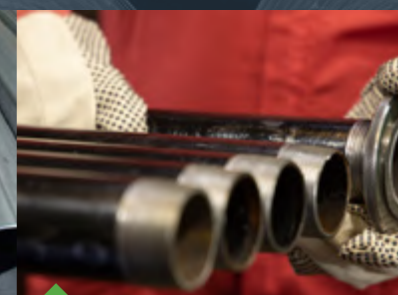
Water Based Red Painted Pipes



MS Pipe



Painted & Threaded Pipes



Pre-Galvanized Rectangular Tubes

BUSINESS EXCELLENCE

KAIZEN PRACTICES

Organizational transformation towards high performance is not merely a choice but often becomes a necessity driven by various factors that impact an organization's ability to thrive in a rapidly evolving landscape.



CONTINUOUS IMPROVEMENT

- › Integration of Kaizen as a part of the organizational culture.
- › Ongoing cycles of assessments and reviews
- › Performance metrics and accountability



Why did we start this Journey of transformation?

We began this transformation journey because we wanted to make things better and keep growing. Market changes, what customers want, new technology, and global trends pushed us to start this transformation journey.

FROM LEGACY TO LEADING-EDGE: OUR EVOLUTION

OLD STATE: FOUNDATIONS FOR GROWTH

CUSTOMER BASE AND MACHINERY

- › Shifting from traditional to dynamic customer engagement.
- › Modernizing operations from less efficient to cutting-edge machinery.

ORGANIZATIONAL CULTURE

- › Cultivating innovation from a dedicated and seasoned workforce.

TECHNOLOGICAL INFRASTRUCTURE

- › Upgrading from outdated systems to streamlined IT solutions.

LEADING INTO TOMORROW

Steps taken to govern and sustain the cultural transformation.

| | |
|----|---|
| 01 | Deployment of Strategies |
| 02 | Continued Efforts for Long-Term Success |
| 03 | Improvement as a core element of the future strategy. |
| 04 | Integration of Best Practices |
| 05 | Monitoring and Adaptation |
| 06 | Setting measurable goals and KPIs to ensure the ongoing sustainability of positive outcomes |

NEW STATE: A PIONEERING VISION REALIZED

ORGANIZATIONAL STRUCTURE AND INITIATIVES

- › Reinvented framework and compensation with a focus on development and recognition.

TECHNOLOGY ADVANCEMENTS IMPLEMENTED

- › Leap to efficiency with integrated ERP, Fintech, and blockchain solutions.

ADOPTED BUSINESS PHILOSOPHY MODELS

- › Commitment to continuous improvement through KAIZEN and strategic performance with Business Score Cards (BSCs).

UPGRADED MACHINERY

- › Transition to high-speed, lean manufacturing machinery employing 5S principles.

STRATEGIC MARKETING INITIATIVES

- › Expanding our reach with innovative branding, market analysis, and customer-focused plans.

COMMITMENT TO ESG SUSTAINABILITY

- › With initiatives to reduce carbon footprint through renewable energy and waste reduction, along with ethical practices including fair labor standards and responsible material sourcing

A SHIFT IN ORGANIZATIONAL CULTURE



CUSTOMER ENGAGEMENT



ADVANCED MACHINERY



SYSTEMATIZED WORKSPACE



EXCELLENCE TRAININGS



PERSONNEL

Teamwork only works when team members feel comfortable speaking openly, sharing ideas (and building on those of others), making suggestions, and voicing their opinions. At UTP Group, we ensure that communication is flowing not only downward, but also upward amongst our 450+ team members.

We have a commitment to continuous training and also the welfare of all our employees. UTP Group values information sharing and continual skill development, and each team member experiences a caring journey toward endless advancement. Our employees' dedication is the fuel that keeps our engines going and makes working for the company so unique.

This is why we have managed to attract and retain some of the best people in the industry, all of whom are fully committed to surpassing all clients' expectations by delivering superior quality products with a level of care and customer service that is hard to beat.

Our responsive customer service team is here to assist you seamlessly, from the moment we receive your inquiry to the delivery of your order. At UTP Group, we prioritize your satisfaction at every step.

We set ourselves apart by being responsible employers who strive to ensure the general well-being of our employees. This commitment is reflected in our dedication to the value we generate for our clients and business partners.



”

Our business relationship does not end with the receipt of your order



”

We have a commitment to continuous training and also the welfare of all our employees

”

Our responsive customer service team is here to assist you seamlessly, from the moment we receive your inquiry to the delivery of your order.

CERTIFICATIONS

UTP Pipe Certifications

- > Certified by BM TRADA for ISO 9001.
- > Certified by SIS/IAS for ISO 14001 & ISO 45001.
- > Certified by API for Line pipe as per API 5L Grade A25 to X 70 PSL1 & API 5L Grade B to X 70M PSL2
- > Certified by API for Casing or Tubing as per API 5CT Grade H40 & J55 PSL1.
- > Listed by UL for manufacture of UL6, Rigid Metal Conduit.
- > Certified by BSI for manufacture of black and galvanized pipes as per Australian standard AS 1074
- > Certified by BSI Benchmark for manufacture of Cold-formed structural steel hollow sections as per AS/NZS 1163.
- > Certified by BSI Benchmark UK for PED (Pressure Equipment Directive) as per EN 10255+A1, EN 10217-1 & EN 10217-2.
- > Certified by TUV Nord for CE Mark for BS EN 10255 and EN 10219-1 for both Black and Galvanized steel pipes.
- > Certified by BSI UK for UKCA-Certification of conformity of the Factory production control as per EN 10219-1 for Cold formed welded structural hollow sections of non-alloy and fine grain steels.
- > Listed by UL for manufacture of ASTM A53 SCH40 Grade A and B, ASTM A795 Grade A and ASTM A135 SCH10 Grade A & B for Black & Galvanized steel pipes for Fire Protection systems, Sprinkler systems and Chilled Water systems.
- > Approved by FM for manufacture of ASTM A53 SCH40 and ASTM A135/ ASTM A795 SCH10 Grade B for Fire Sprinkler systems.
- > Approved by ministry of Civil Defence UAE & Qatar for supply of pipes in UAE & Qatar for MEP projects.
- > Certified by ABS for (BC1:2012) Factory Production Control for the manufacture of EN 10219-1 and EN 10219-2.
- > Certified by CSIRO ActivFire, Australia for the manufacture of Fire Sprinkler pipes and Fire Hydrant pipes.
- > Certified by UL for NSF/ANSI 61 standard for the supply of Galvanized Steel Pipes from ½" to 2" and Black Steel Pipes from ½" to 6" for Drinking Water System components – Health effects.
- > Certified by UL for NSF/ANSI 372 standard for the supply of Galvanized Steel Pipes from ½" to 6" and Black Steel Pipes from ½" to 6" for Drinking Water System components – Lead content.
- > Certified by UL for use in accordance with the National Fire Protection Association "National Fuel Gas Code", ANSI/NFPA 54, "Liquefied Petroleum Gas Code", ANSI/NFPA 58, for the supply of Grade A and B ½" to 8".
- > Certified by ACRS (Australian Certification Authority for Reinforcing and Structural) for product AS/NZS 1163 and EN 10219-1&2.
- > Registered and Verified with EPD (Environmental Product Declaration) in compliance with environmental principles of High Frequency Welded Steel Pipes and Tubes, in accordance with ISO 14025 and EN 15804.



THL Pipe Certifications

- > Certified by TUV Rheinland for ISO 9001, 14001 & 45001.
- > Certified by API for Line pipe as per API 5L Grade A25 to X 70 PSL1 & API 5L Grade B to X 80M PSL2 Annex H&J
- > Certified by API for Casing or Tubing as per API 5CT Grade H40, J55 & K55 PSL1.
- > Certified by BSI for manufacture of Cold-formed structural steel hollow sections as per AS/NZS 1163.
- > Certified by TUV Nord for CE Mark for BS EN 10219-1 for both Black and Galvanized steel pipes.
- > Listed by UL for manufacture of ASTM A53 SCH40 Grade A and B, ASTM A795 Grade A and ASTM A135 SCH10 Grade A & B for Black & Galvanized steel pipes for Fire Protection systems, Sprinkler systems and Chilled Water systems.
- > Approved by FM for manufacture of ASTM A53 SCH40 and ASTM A135/ ASTM A795 SCH10 Grade B for Fire Sprinkler systems.
- > Certified by ABS for (BC1:2012) Factory Production Control for the manufacture of EN 10219-1 and EN 10219-2.
- > Certified by ACRS (Australian Certification Authority for Reinforcing and Structural) for product AS/NZS 1163 and EN 10219-1&2.
- > Registered and Verified with EPD (Environmental Product Declaration) in compliance with environmental principles of High Frequency Welded Steel Pipes and Tubes, in accordance with ISO 14025 and EN 15804.

CHS (CIRCLUAR HOLLOW SECTIONS) - GENERIC PRODUCT OFFERING

STANDARDS: ASTM A53, ASME SA53, ASTM A135, ASTM A500, ASTM A795, AS/NZS 1163, BS EN39, AS 1074, EN 10255, EN 10217-1&2, EN 10219, SAN 657-3, F1083

| SIZE (inches) | OD (mm) | 1.50 | 1.70 | 1.80 | 2.00 | 2.10 | 2.30 | 2.50 | 2.60 | 2.70 | 2.80 | 2.90 | 3.00 | 3.30 | 3.50 | 3.60 | 3.73 | 3.90 | 4.00 | 4.20 | 4.50 | 4.60 | 4.90 | 5.00 | 5.10 | 5.30 | 5.50 | 5.60 | 6.00 | 6.35 | 6.50 | 6.55 | 6.90 | 7.00 | 7.50 | 7.62 | 7.80 | 8.00 | 8.50 | 9.00 | 9.50 | 10.00 | 10.50 | 11.00 | 11.50 | 12.00 | 12.70 | OD (mm) | SIZE (inches) | | | | | | |
|---------------|-------------|------|------|------|------|------|------|------|------|------|------|------|------|------|------|------|------|------|------|------|------|------|------|------|------|------|------|------|------|------|------|------|------|------|------|------|------|------|------|------|------|-------|-------|-------|-------|-------|-------|---------|---------------|------|-------|--------|--------|--------|-----|
| 1/2" | 21.3 | | | | | | | | | | | | | | | | | | | | | | | | | | | | | | | | | | | | | | | | | | | | | | | | | 21.3 | 1/2" | | | | |
| 3/4" | 26.7 / 26.9 | | | | | | | | | | | | | | | | | | | | | | | | | | | | | | | | | | | | | | | | | | | | | | | | | | | 26.7 | 3/4" | | |
| 1" | 33.4 / 33.7 | | | | | | | | | | | | | | | | | | | | | | | | | | | | | | | | | | | | | | | | | | | | | | | | | | | 33.4 | 1" | | |
| 1-1/4" | 42.2 / 42.4 | | | | | | | | | | | | | | | | | | | | | | | | | | | | | | | | | | | | | | | | | | | | | | | | | | | 42.2 | 1-1/4" | | |
| 1-1/2" | 48.3 | | | | | | | | | | | | | | | | | | | | | | | | | | | | | | | | | | | | | | | | | | | | | | | | | | | 48.3 | 1-1/2" | | |
| 2" | 60.3 | | | | | | | | | | | | | | | | | | | | | | | | | | | | | | | | | | | | | | | | | | | | | | | | | | | 60.3 | 2" | | |
| 2-1/2" | 73.02 | | | | | | | | | | | | | | | | | | | | | | | | | | | | | | | | | | | | | | | | | | | | | | | | | | 73.02 | 2-1/2" | | | |
| | 76.10 | | | | | | | | | | | | | | | | | | | | | | | | | | | | | | | | | | | | | | | | | | | | | | | | | | 76.10 | | | | |
| 3" | 88.9 | | | | | | | | | | | | | | | | | | | | | | | | | | | | | | | | | | | | | | | | | | | | | | | | | | | | 88.9 | 3" | |
| 3-1/2" | 101.6 | | | | | | | | | | | | | | | | | | | | | | | | | | | | | | | | | | | | | | | | | | | | | | | | | | | | 101.6 | 3-1/2" | |
| 4" | 114.3 | | | | | | | | | | | | | | | | | | | | | | | | | | | | | | | | | | | | | | | | | | | | | | | | | | | | 114.3 | 4" | |
| 5" | 139.7 | | | | | | | | | | | | | | | | | | | | | | | | | | | | | | | | | | | | | | | | | | | | | | | | | | | 139.7 | 5" | | |
| | 141.3 | | | | | | | | | | | | | | | | | | | | | | | | | | | | | | | | | | | | | | | | | | | | | | | | | | | 141.3 | | | |
| 6" | 165.1 | | | | | | | | | | | | | | | | | | | | | | | | | | | | | | | | | | | | | | | | | | | | | | | | | | | | 165.1 | 6" | |
| | 168.3 | | | | | | | | | | | | | | | | | | | | | | | | | | | | | | | | | | | | | | | | | | | | | | | | | | | 168.3 | | | |
| 7" | 177.80 | | | | | | | | | | | | | | | | | | | | | | | | | | | | | | | | | | | | | | | | | | | | | | | | | | | | 177.80 | 7" | |
| 7.626" | 193.70 | | | | | | | | | | | | | | | | | | | | | | | | | | | | | | | | | | | | | | | | | | | | | | | | | | | | 193.70 | 7.626" | |
| 8" | 219.10 | | | | | | | | | | | | | | | | | | | | | | | | | | | | | | | | | | | | | | | | | | | | | | | | | | | | 219.10 | 8" | |
| 9" | 244.50 | | | | | | | | | | | | | | | | | | | | | | | | | | | | | | | | | | | | | | | | | | | | | | | | | | | | | 244.50 | 9" |
| 10" | 273.00 | | | | | | | | | | | | | | | | | | | | | | | | | | | | | | | | | | | | | | | | | | | | | | | | | | | | | 273.00 | 10" |
| 12" | 323.80 | | | | | | | | | | | | | | | | | | | | | | | | | | | | | | | | | | | | | | | | | | | | | | | | | | | | | 323.80 | 12" |

* The table above is for guidance only. Some sizes may not be covered by regular manufacturing cycles. Other sizes may be available upon request. Please refer to the detailed technical datasheet for specifications, sizes and length.
 * The sizes provided in the table may have their production at separate facilities (Universal Tube and Pipe Industries FZE & THL Tube and Pipe Industries LLC). Please reach out to the account manager for more details.
 * Finish Options Available: Please refer to the technical datasheet or reach out to our account managers for complete information regarding the available options for end and surface finishes on selected sizes of our products.

SHS & RHS (SQUARE & RECTANGULAR HOLLOW SECTIONS) - GENERIC PRODUCT OFFERING

STANDARDS: ASTM A500, AS/NZS 1163, EN 10219

SHS

RHS

SHS

RHS

| SIZE | 1.20 | 1.30 | 1.40 | 1.50 | 1.80 | 2.00 | 2.50 | 3.00 | 3.20 | 3.50 | 3.60 | 4.00 | 4.20 | 4.50 | 5.00 | 5.10 | 5.50 | 6.00 | 6.40 | 6.50 | 7.00 | 7.50 | 7.80 | 8.00 | 8.50 | 9.00 | 9.50 | 10.00 | 10.50 | 11.00 | 11.50 | 12.00 | SIZE | | |
|-----------|------|------|------|------|------|------|------|------|------|------|------|------|------|------|------|------|------|------|------|------|------|------|------|------|------|------|------|-------|-------|-------|-------|-------|------|-------|-----------|
| 19X19 | | | | | | | | | | | | | | | | | | | | | | | | | | | | | | | | | | 19X19 | |
| 20X20 | | | | | | | | | | | | | | | | | | | | | | | | | | | | | | | | | | | 20X20 |
| 25X25 | | | | | | | | | | | | | | | | | | | | | | | | | | | | | | | | | | | 25X25 |
| 30X30 | | | | | | | | | | | | | | | | | | | | | | | | | | | | | | | | | | | 30X30 |
| 32X32 | | | | | | | | | | | | | | | | | | | | | | | | | | | | | | | | | | | 32X32 |
| 35X35 | | | | | | | | | | | | | | | | | | | | | | | | | | | | | | | | | | | 35X35 |
| 38X38 | | | | | | | | | | | | | | | | | | | | | | | | | | | | | | | | | | | 38X38 |
| 40X20 | | | | | | | | | | | | | | | | | | | | | | | | | | | | | | | | | | | 40X20 |
| 40X40 | | | | | | | | | | | | | | | | | | | | | | | | | | | | | | | | | | | 40X40 |
| 50X25 | | | | | | | | | | | | | | | | | | | | | | | | | | | | | | | | | | | 50X25 |
| 50X30 | | | | | | | | | | | | | | | | | | | | | | | | | | | | | | | | | | | 50X30 |
| 50X50 | | | | | | | | | | | | | | | | | | | | | | | | | | | | | | | | | | | 50X50 |
| 60X30 | | | | | | | | | | | | | | | | | | | | | | | | | | | | | | | | | | | 60X30 |
| 60X40 | | | | | | | | | | | | | | | | | | | | | | | | | | | | | | | | | | | 60X40 |
| 60X60 | | | | | | | | | | | | | | | | | | | | | | | | | | | | | | | | | | | 60X60 |
| 63.5X63.5 | | | | | | | | | | | | | | | | | | | | | | | | | | | | | | | | | | | 63.5X63.5 |
| 65X35 | | | | | | | | | | | | | | | | | | | | | | | | | | | | | | | | | | | 65X35 |
| 65X65 | | | | | | | | | | | | | | | | | | | | | | | | | | | | | | | | | | | 65X65 |
| 70X30 | | | | | | | | | | | | | | | | | | | | | | | | | | | | | | | | | | | 70X30 |
| 70X40 | | | | | | | | | | | | | | | | | | | | | | | | | | | | | | | | | | | 70X40 |
| 70X50 | | | | | | | | | | | | | | | | | | | | | | | | | | | | | | | | | | | 70X50 |
| 70X70 | | | | | | | | | | | | | | | | | | | | | | | | | | | | | | | | | | | 70X70 |
| 75X50 | | | | | | | | | | | | | | | | | | | | | | | | | | | | | | | | | | | 75X50 |
| 75X75 | | | | | | | | | | | | | | | | | | | | | | | | | | | | | | | | | | | 75X75 |
| 80X20 | | | | | | | | | | | | | | | | | | | | | | | | | | | | | | | | | | | 80X20 |
| 80X40 | | | | | | | | | | | | | | | | | | | | | | | | | | | | | | | | | | | 80X40 |
| 80X60 | | | | | | | | | | | | | | | | | | | | | | | | | | | | | | | | | | | 80X60 |
| 80X80 | | | | | | | | | | | | | | | | | | | | | | | | | | | | | | | | | | | 80X80 |
| 89X89 | | | | | | | | | | | | | | | | | | | | | | | | | | | | | | | | | | | 89X89 |
| 90X50 | | | | | | | | | | | | | | | | | | | | | | | | | | | | | | | | | | | 90X50 |
| 90X60 | | | | | | | | | | | | | | | | | | | | | | | | | | | | | | | | | | | 90X60 |
| 90X90 | | | | | | | | | | | | | | | | | | | | | | | | | | | | | | | | | | | 90X90 |
| 100X40 | | | | | | | | | | | | | | | | | | | | | | | | | | | | | | | | | | | 100X40 |
| 100X50 | | | | | | | | | | | | | | | | | | | | | | | | | | | | | | | | | | | 100X50 |
| 100X60 | | | | | | | | | | | | | | | | | | | | | | | | | | | | | | | | | | | 100X60 |
| 100X80 | | | | | | | | | | | | | | | | | | | | | | | | | | | | | | | | | | | 100X80 |
| 100X100 | | | | | | | | | | | | | | | | | | | | | | | | | | | | | | | | | | | 100X100 |
| 120X60 | | | | | | | | | | | | | | | | | | | | | | | | | | | | | | | | | | | 120X60 |
| 120X80 | | | | | | | | | | | | | | | | | | | | | | | | | | | | | | | | | | | 120X80 |
| 120X120 | | | | | | | | | | | | | | | | | | | | | | | | | | | | | | | | | | | 120X120 |
| 125X75 | | | | | | | | | | | | | | | | | | | | | | | | | | | | | | | | | | | 125X75 |
| 125X125 | | | | | | | | | | | | | | | | | | | | | | | | | | | | | | | | | | | 125X125 |
| 140X80 | | | | | | | | | | | | | | | | | | | | | | | | | | | | | | | | | | | 140X80 |
| 140X140 | | | | | | | | | | | | | | | | | | | | | | | | | | | | | | | | | | | 140X140 |
| 150X75 | | | | | | | | | | | | | | | | | | | | | | | | | | | | | | | | | | | 150X75 |
| 150X100 | | | | | | | | | | | | | | | | | | | | | | | | | | | | | | | | | | | 150X100 |
| 150X150 | | | | | | | | | | | | | | | | | | | | | | | | | | | | | | | | | | | 150X150 |
| 160X80 | | | | | | | | | | | | | | | | | | | | | | | | | | | | | | | | | | | 160X80 |
| 160X160 | | | | | | | | | | | | | | | | | | | | | | | | | | | | | | | | | | | 160X160 |
| 180X180 | | | | | | | | | | | | | | | | | | | | | | | | | | | | | | | | | | | 180X180 |
| 200X100 | | | | | | | | | | | | | | | | | | | | | | | | | | | | | | | | | | | 200X100 |
| 200X120 | | | | | | | | | | | | | | | | | | | | | | | | | | | | | | | | | | | 200X120 |
| 200X150 | | | | | | | | | | | | | | | | | | | | | | | | | | | | | | | | | | | 200X150 |
| 200X200 | | | | | | | | | | | | | | | | | | | | | | | | | | | | | | | | | | | 200X200 |
| 240X80 | | | | | | | | | | | | | | | | | | | | | | | | | | | | | | | | | | | 240X80 |
| 250X100 | | | | | | | | | | | | | | | | | | | | | | | | | | | | | | | | | | | 250X100 |
| 250X150 | | | | | | | | | | | | | | | | | | | | | | | | | | | | | | | | | | | 250X150 |
| 250X250 | | | | | | | | | | | | | | | | | | | | | | | | | | | | | | | | | | | 250X250 |
| 300X100 | | | | | | | | | | | | | | | | | | | | | | | | | | | | | | | | | | | 300X100 |
| 300X150 | | | | | | | | | | | | | | | | | | | | | | | | | | | | | | | | | | | 300X150 |
| 300X200 | | | | | | | | | | | | | | | | | | | | | | | | | | | | | | | | | | | 300X200 |

*The table above is for guidance only. Some sizes may not be covered by regular manufacturing cycles. Other sizes may be available upon request. Please refer to the detailed technical datasheet for specifications, sizes and length.

* The sizes provided in the table may have their production at separate facilities (Universal Tube and Pipe Industries FZE & THL Tube and Pipe Industries LLC). Please reach out to the account manager for more details.

* Finish Options Available: Please refer to the technical datasheet or reach out to our account managers for complete information regarding the available options for end and surface finishes on selected sizes of our products.

API 5CT - TUBING & CASING - GENERIC PRODUCT OFFERING

TUBING
CASING

TUBING
CASING

| SIZE (inches) | OD (mm) | 4.83 | 5.21 | 5.51 | 5.69 | 5.74 | 5.87 | 6.20 | 6.35 | 6.45 | 6.65 | 6.71 | 6.91 | 6.98 | 7.09 | 7.32 | 7.37 | 7.62 | 7.72 | 7.92 | 8.05 | 8.33 | 8.89 | 8.94 | 9.17 | 9.19 | 9.52 | 10.03 | 10.16 | 10.36 | 10.59 | 10.92 | 11.05 | 11.43 | 11.51 | 11.99 | 12.06 | OD (mm) | SIZE (inches) | |
|---------------|---------|--------|--------|--------|--------|------|------|------|------|--------|--------|------|------|------|------|------|------|------|------|------|------|------|------|------|------|------|------|-------|-------|-------|-------|-------|-------|-------|-------|-------|-------|---------|---------------|--------|
| 2-3/8" | 60.32 | TUBING | | | | | | | | | | | | | | | | | | | | | | | | | | | | | | | | | | | | 2-3/8" | 60.32 | |
| 2-7/8" | 73.02 | | | TUBING | | | | | | | | | | | | | | | | | | | | | | | | | | | | | | | | | | | 2-7/8" | 73.02 |
| 3-1/2" | 88.90 | | | | | | | | | TUBING | | | | | | | | | | | | | | | | | | | | | | | | | | | | | 3-1/2" | 88.90 |
| 4" | 101.60 | | | | TUBING | | | | | | TUBING | | | | | | | | | | | | | | | | | | | | | | | | | | | | 4" | 101.60 |
| 4-1/2" | 114.30 | | CASING | | | | | | | | | | | | | | | | | | | | | | | | | | | | | | | | | | | | 4-1/2" | 114.30 |
| 5-1/2" | 139.70 | | | | | | | | | | | | | | | | | | | | | | | | | | | | | | | | | | | | | | 5-1/2" | 139.70 |
| 6-5/8" | 168.28 | | | | | | | | | | | | | | | | | | | | | | | | | | | | | | | | | | | | | | 6-5/8" | 168.28 |
| 7" | 177.80 | | | | | | | | | | | | | | | | | | | | | | | | | | | | | | | | | | | | | | 7" | 177.80 |
| 7-5/8" | 193.68 | | | | | | | | | | | | | | | | | | | | | | | | | | | | | | | | | | | | | | 7-5/8" | 193.68 |
| 8-5/8" | 219.08 | | | | | | | | | | | | | | | | | | | | | | | | | | | | | | | | | | | | | | 8-5/8" | 219.08 |
| 9-5/8" | 244.48 | | | | | | | | | | | | | | | | | | | | | | | | | | | | | | | | | | | | | | 9-5/8" | 244.48 |
| 10-3/4" | 273.05 | | | | | | | | | | | | | | | | | | | | | | | | | | | | | | | | | | | | | | 10-3/4" | 273.05 |

* Including Tubing with special Chemical Composition suitable for upgrade to L-80 and N-80 Grade.

API 5L - LINE PIPES - GENERIC PRODUCT OFFERING

| SIZE (inches) | OD (mm) | 2.60 | 2.77 | 2.87 | 3.20 | 3.38 | 3.56 | 3.60 | 3.68 | 3.73 | 3.91 | 4.00 | 4.40 | 4.50 | 4.55 | 4.80 | 4.85 | 5.00 | 5.08 | 5.16 | 5.20 | 5.49 | 5.54 | 5.60 | 5.74 | 6.00 | 6.40 | 6.60 | 7.00 | 7.10 | 7.80 | 7.90 | 8.20 | 8.40 | 8.70 | 9.30 | 9.50 | 10.30 | 11.10 | OD (mm) | SIZE (inches) | | | |
|---------------|---------|--------|--------|--------|--------|--------|------|------|------|--------|--------|--------|--------|------|--------|------|------|------|------|------|------|------|------|------|--------|------|--------|------|------|------|------|------|------|------|------|------|------|-------|-------|---------|---------------|------|---------|--------|
| 1/2" | 21.34 | CASING | CASING | | CASING | | | | | CASING | | | | | | | | | | | | | | | | | | | | | | | | | | | | | | | | 1/2" | 21.34 | |
| 3/4" | 26.67 | CASING | | CASING | CASING | | | | | | CASING | | | | | | | | | | | | | | | | | | | | | | | | | | | | | | | | 3/4" | 26.67 |
| 1" | 33.40 | | | | CASING | CASING | | | | | | CASING | | | CASING | | | | | | | | | | | | | | | | | | | | | | | | | | | | 1" | 33.40 |
| 1-1/4" | 42.16 | | | | CASING | | | | | | | CASING | | | | | | | | | | | | | | | | | | | | | | | | | | | | | | | 1-1/4" | 42.16 |
| 1-1/2" | 48.26 | | | | CASING | | | | | | | CASING | | | | | | | | | | | | | | | | | | | | | | | | | | | | | | | 1-1/2" | 48.26 |
| 2" | 60.30 | | | | | | | | | | | CASING | | | | | | | | | | | | | CASING | | | | | | | | | | | | | | | | | | 2" | 60.30 |
| 2-1/2" | 73.05 | | | | | | | | | | | | | | | | | | | | | | | | | | | | | | | | | | | | | | | | | | 2-1/2" | 73.05 |
| 3" | 76.10 | | | | | | | | | | | | | | | | | | | | | | | | | | | | | | | | | | | | | | | | | | 3" | 76.10 |
| 3-1/2" | 88.90 | | | | | | | | | | | | | | | | | | | | | | | | | | | | | | | | | | | | | | | | | | 3-1/2" | 88.90 |
| 4" | 101.60 | | | | | | | | | | | | | | | | | | | | | | | | | | | | | | | | | | | | | | | | | | 4" | 101.60 |
| 4-1/2" | 114.30 | | | | CASING | | | | | | | CASING | CASING | | | | | | | | | | | | CASING | | CASING | | | | | | | | | | | | | | | | 4-1/2" | 114.30 |
| 5-9/16" | 141.30 | | | | | | | | | | | | | | | | | | | | | | | | | | | | | | | | | | | | | | | | | | 5-9/16" | 141.30 |
| 6-5/8" | 168.30 | | | | CASING | | | | | | | CASING | CASING | | | | | | | | | | | | CASING | | CASING | | | | | | | | | | | | | | | | 6-5/8" | 168.30 |
| 8-5/8" | 219.10 | | | | CASING | | | | | | | CASING | CASING | | | | | | | | | | | | CASING | | CASING | | | | | | | | | | | | | | | | 8-5/8" | 219.10 |
| 10-3/4" | 273.10 | | | | | | | | | | | CASING | | | | | | | | | | | | | CASING | | CASING | | | | | | | | | | | | | | | | 10-3/4" | 273.10 |
| 12-3/4" | 323.90 | | | | | | | | | | | | CASING | | | | | | | | | | | | CASING | | CASING | | | | | | | | | | | | | | | | 12-3/4" | 323.90 |

* The table above is for guidance only. Some sizes may not be covered by regular manufacturing cycles. Other sizes may be available upon request. Please refer to the detailed technical datasheet for specifications, sizes and length.

* The sizes provided in the table may have their production at separate facilities (Universal Tube and Pipe Industries FZE & THL Tube and Pipe Industries LLC). Please reach out to the account manager for more details.

* Finish Options Available: Please refer to the technical datasheet or reach out to our account managers for complete information regarding the available options for end and surface finishes on selected sizes of our products.

BECAUSE, WE'RE HERE TO HELP

Your needs are our top priority. If you have a specific request, just let us know – we're here to assist in any way possible.

ADDRESS

UNIVERSAL TUBE & PIPE INDUSTRIES FZE
P.O. Box: 16879, JAFZA,
Dubai, UAE
T: +971 4 883 5966, F: + 971 4 883 5675

THL TUBE & PIPE INDUSTRIES LLC
P.O. Box: 49695, DIP-2,
Dubai, UAE
T: +971 4 884 8221, F: + 971 4 884 8229

WEBSITE

www.utpgroup.co



Sustain and Progress!